

11°21'E

11°24'E

11°27'E

11°30'E

11°33'E

11°36'E

**GEOMORPHOLOGICAL MAP OF KVADEHUKSLETTA, BRØGGERHALVØYA (SVALBARD, NORWAY)**  
**CARTA GEOMORFOLOGICA DI KVADEHUKSLETTA, BRØGGERHALVØYA (SVALBARD, NORVEGIA)**

Cynthia Victoria Sassenroth<sup>1</sup>, Maria Cristina Salvatore<sup>1,2</sup>, Ernst Hauber<sup>1,2</sup>, Tilman Bucher<sup>1</sup>, Carlo Baroni<sup>1,2</sup>

1. Dipartimento di Scienze della Terra, University of Pisa, Italy  
 2. Istituto di Geoscienze e Georisorse, Consiglio Nazionale delle Ricerche, Pisa, Italy  
 3. German Aerospace Center (DLR), Institute for Planetary Research, Berlin, Germany  
 4. German Aerospace Center (DLR), Institute for Optical Sensor Systems, Berlin, Germany

**LEGEND / LEGENDA**

active / attivo    inactive / non attivo    **HYDROGRAPHY / IDROGRAFIA**

- Spring / sorgente
- Stream / corso d'acqua
- Subsurface water tracks / Traccia di deflusso sotterraneo
- Lake / lago
- Lagoon / laguna

**LACUSTRINE LANDFORMS AND DEPOSITS / FORME E DEPOSITI LACUSTRI**

- Pond and swamp deposit / Stagno o deposito palustre
- Lacustrine deposit / Deposito lacustre

**FLUVIAL AND FLUVIO-GLACIAL LANDFORMS AND DEPOSITS / FORME E DEPOSITI FLUVIALI E FLUVIO-GLACIALI**

**EROSIONAL LANDFORMS / FORME DI EROSIONE**

- Waterfall / Cascata
- Edge of fluvial erosion scarp / Orlo di scarpata di erosione fluviale
- Crevasse channel / Canale di erosidazione

**CONSTRUCTIONAL LANDFORMS AND DEPOSITS / FORME DI ACCUMULO E DEPOSITI**

- Alluvial fan / Conoide alluvionale
- Fluvial deposit / boulder / Deposito alluvionale / masso
- Colluvial deposit / Deposito colluviale

**COASTAL LANDFORMS AND DEPOSITS / FORME E DEPOSITI COSTIERI**

**EROSIONAL LANDFORMS / FORME DI EROSIONE**

- Edge of coastal erosion scarp / Orlo di scarpata di erosione costiera
- Edge of tidal erosion scarp / Orlo di scarpata di erosione da marea
- Tidal channel / Canale di marea
- Wave-cut platform / Piattaforma costiera di abrasione

**CONSTRUCTIONAL LANDFORMS AND DEPOSITS / FORME DI ACCUMULO E DEPOSITI**

- Berm / Berma
- Present day marine deposit / Deposito marino recente
- Pre-LGM marine deposit / Deposito marino pre-LGM
- Post-LGM marine deposit / Deposito marino post-LGM

**GRAVITY-INDUCED LANDFORMS AND DEPOSITS / FORME E DEPOSITI DOVUTI ALLA GRAVITA'**

**EROSIONAL LANDFORMS / FORME DI EROSIONE**

- Edge of degradational scarp / Orlo di scarpata di degradazione
- CONSTRUCTIONAL LANDFORMS AND DEPOSITS / FORME DI ACCUMULO E DEPOSITI
- Rock fall / Frana di crollo
- Scree slope and debris / Falda di copertura di detriti

**GLACIAL LANDFORMS AND DEPOSITS / FORME E DEPOSITI GLACIALI**

- Erratic boulder / Masso erratico

**PERIGLACIAL AND NIVAL LANDFORMS / FORME PERIGLACIALI E NIVALI**

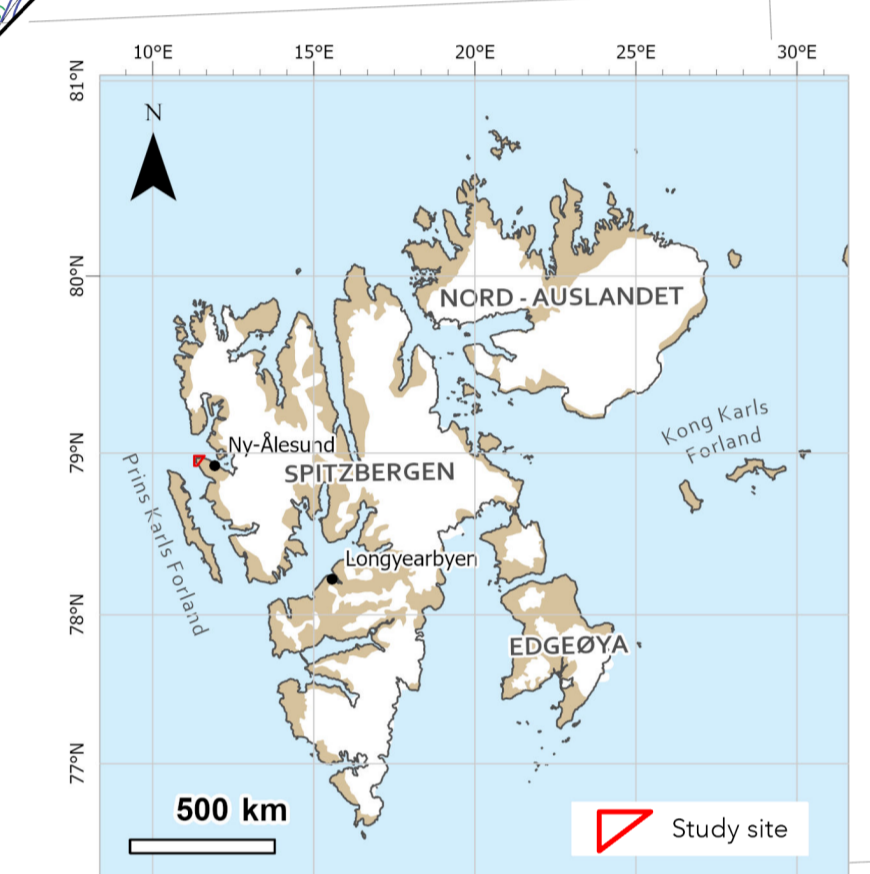
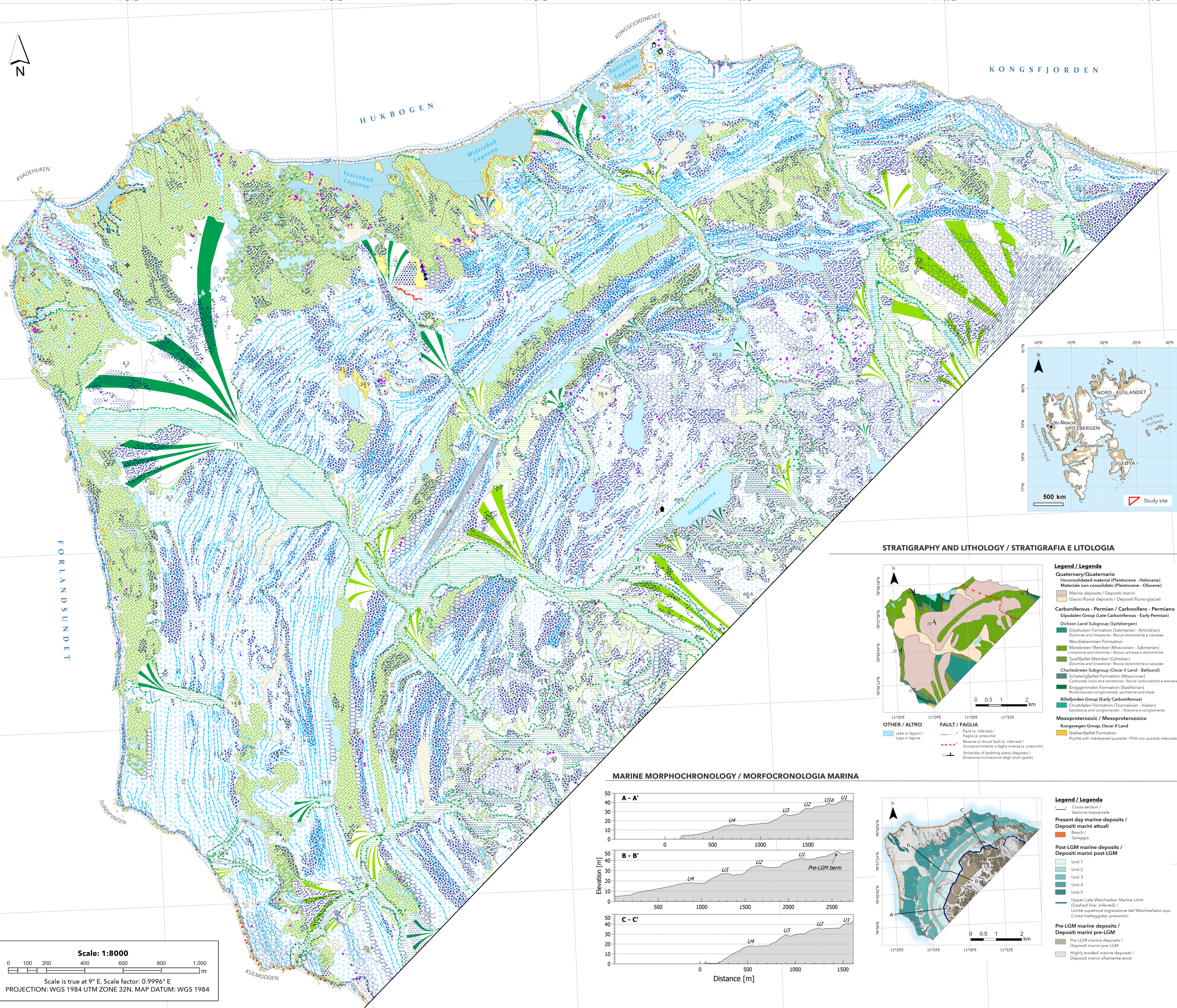
- Delte / Delta
- Edge of solifluction terrace / Orlo di terrazzo di soliflusso
- Blockstream / Corso di blocchi
- Blockfield / Campo di pietre
- Frost shattered pavement / Pavimento di gneissati
- Frost creep and solifluction lobe / Lobo di avanzamento e soliflusso
- Patterned ground / Terreno modellato
- Sorted stone circles / Cerchi di pietre selezionate
- Slope oriented circles / Cerchi di pietre orientate
- Thermal-contraction crack polygons / Poligoni da frattura di contrazione
- Sorted nets / Reti selezionate
- Sorted stripes / Strisce selezionate
- Patterned hummocky terrain / Terreno a cuscinetti

**STRUCTURAL LANDFORMS AND BEDROCK / FORME LITO-STRUTTURALI**

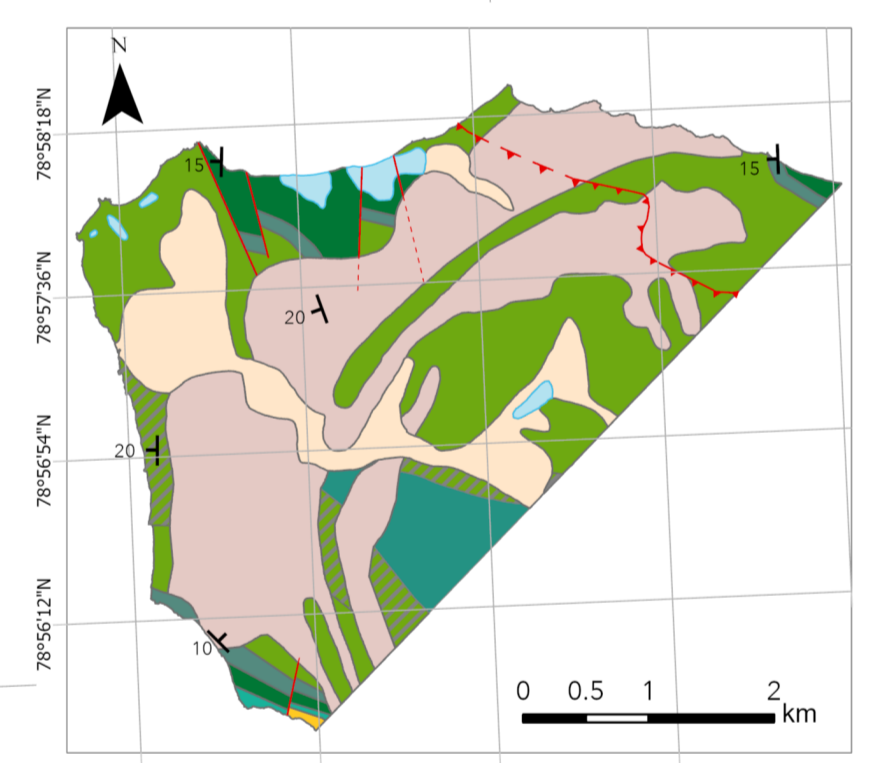
- Edge of structural scarp / Orlo di scarpata strutturale
- Fault / Faglia
- Bedrock / Sottosuolo
- Tor / Tor

**OTHER DATA AND ANTHROPOGENIC FEATURES / ALTRI DATI ED ELEMENTI ANTROPICI**

- Elevation point (m) / Punto di elevazione (m)
- Contour line (interval 5 m) / Curva di livello (elevazione 5 m)
- Tree trunk / Tronco d'albero
- Hut / Capanna
- Ruin / Rovina
- Lightsignal / Segnale
- Meteorological station / Stazione meteorologica
- Circular arranged boulders / Massi disposti in cerchi
- Road / Strada
- Provisional landing strip / Pista di atterraggio provvisoria

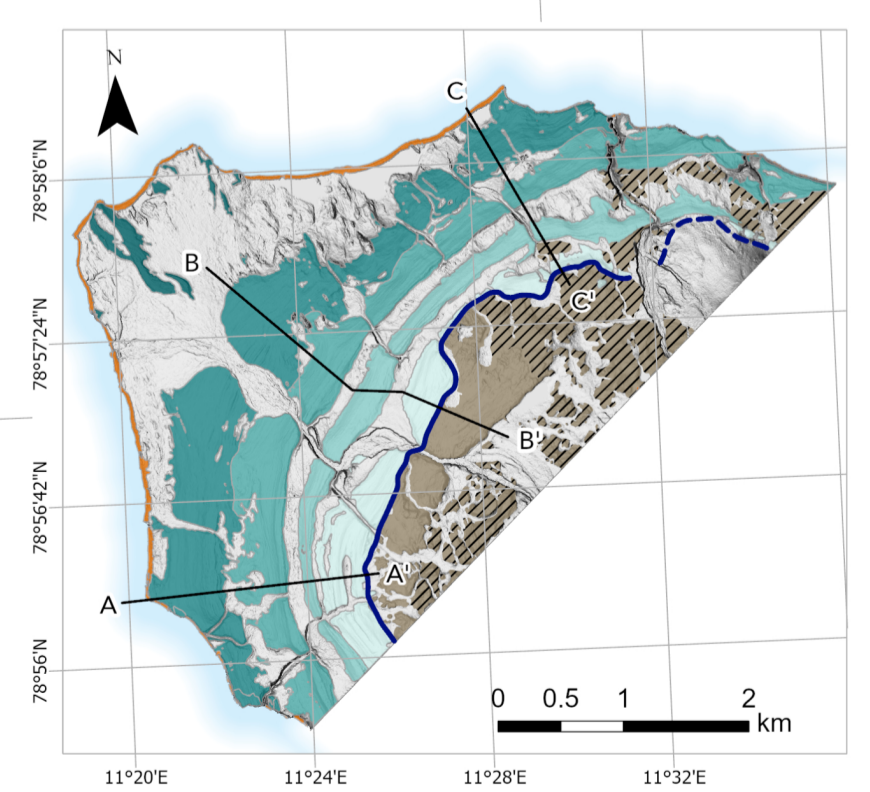


**STRATIGRAPHY AND LITHOLOGY / STRATIGRAFIA E LITOLOGIA**



- Legend / Legenda**
- Quaternary/Quaternario**  
 Unconsolidated material (Pleistocene - Holocene) / Materiale non consolidato (Pleistocene - Olocene)  
 Marine deposits / Depositi marini  
 Glacio-fluvial deposits / Depositi fluvio-glaciali
- Carboniferous - Permian / Carbonifero - Permiano**  
 Gipsdalen Group (Late Carboniferous - Early Permian)  
 Dickson Land Subgroup (Spitzbergen)  
 Gipsdalen Formation (Sakmarian - Artinskian)  
 Dolomite and limestone / Rocce calcaree e dolomitiche  
 Wordiekammen Formation  
 Morebreen Member (Moscovian - Sakmarian)  
 Limestone and dolomite / Rocce calcaree e dolomitiche  
 Tynefjellet Member (Gzhelian)  
 Dolomite and limestone / Rocce dolomitiche e calcaree
- Charleybreen Subgroup (Oscar II Land - Bellund)**  
 Scherfjället Formation (Moscovian)  
 Carbonate rocks and sandstone / Rocce carbonatiche e arenarie  
 Brøggerfjorden Formation (Bashkirian)  
 Multicoloured conglomerate, sandstone and shale
- Billefjorden Group (Early Carboniferous)**  
 Orustdalen Formation (Tournaesian - Viséan)  
 Sandstone and conglomerate / Arenarie e conglomerati
- Mesoproterozoic / Mesoproterozoico**  
 Kongsvengen Group, Oscar II Land  
 Nilsenfjället Formation  
 Phyllite with interlayered quartzite / Filiti con quarzite intercalate

**MARINE MORPHOCHRONOLOGY / MORFOCRONOLOGIA MARINA**



- Legend / Legenda**
- Cross section / Sezione trasversale
- Present day marine deposits / Depositi marini attuali**  
 Beach / Spiaggia
- Post-LGM marine deposits / Depositi marini post-LGM**  
 Unit 1  
 Unit 2  
 Unit 3  
 Unit 4  
 Unit 5
- Upper Late Weichselian Marine Limit (Dashed line: inferred) / Limite superiore ingressione del Weichseliano sup. (Linea tratteggiata: presunto)
- Pre-LGM marine deposits / Depositi marini pre-LGM**  
 Pre-LGM marine deposits / Depositi marini pre-LGM  
 Highly eroded marine deposits / Depositi marini altamente erosi

Scale: 1:8000  
 Scale is true at 9° E. Scale factor: 0.9996° E  
 PROJECTION: WGS 1984 UTM ZONE 32N. MAP DATUM: WGS 1984