

GEOMORPHOLOGICAL MAP OF THE VANISHED MARMOTTE GLACIER AREA (ORTLES-CEVEDALE - ITALY)

Luca Carturan^{1,2*}, Norman Gasperini²

¹Department of Land, Environment, Agriculture and Forestry, Università degli Studi di Padova, Legnaro (Padova), Italy

²Department of Geosciences, Università degli Studi di Padova, Padova, Italy

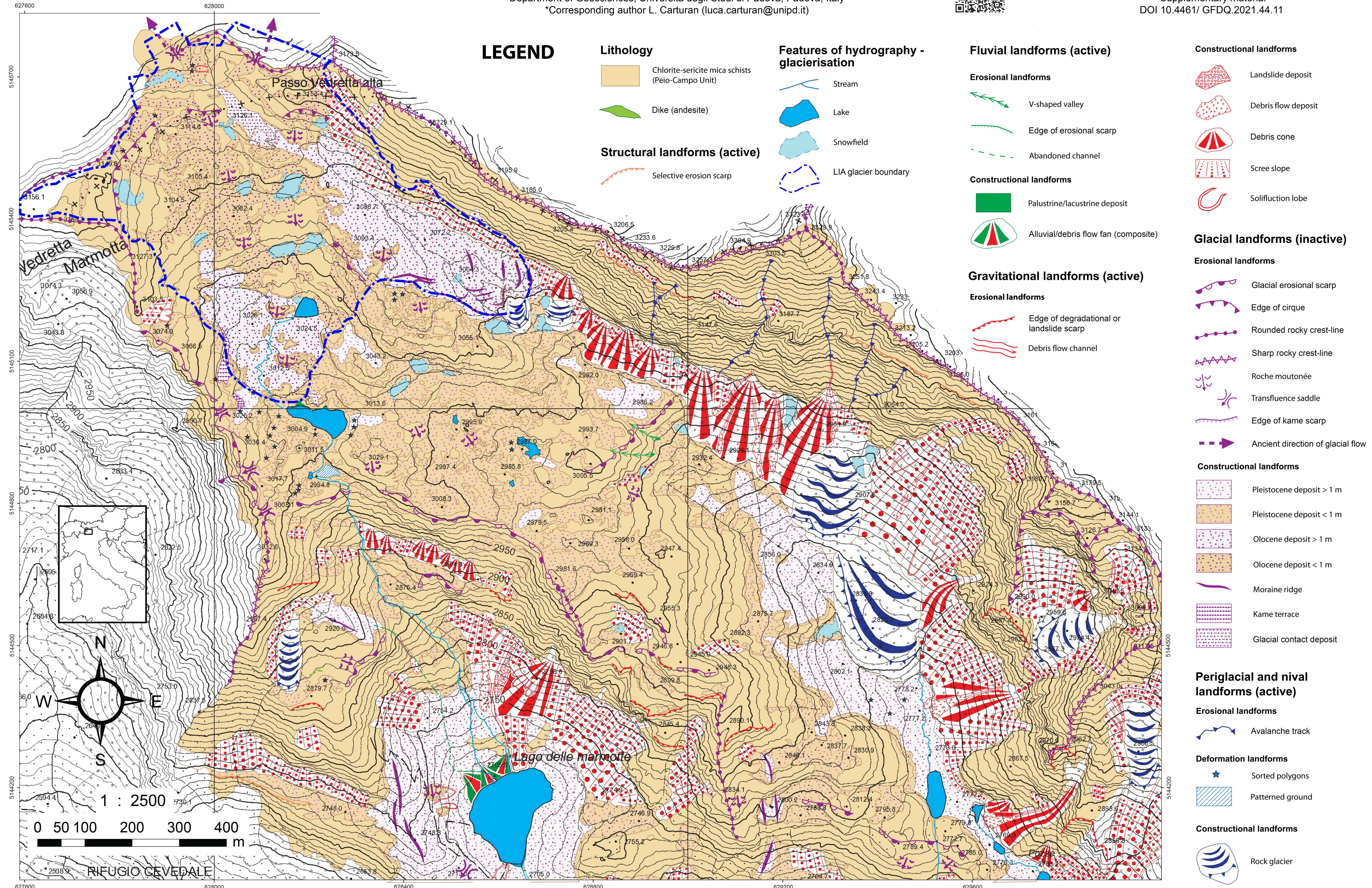
*Corresponding author L. Carturan (luca.carturan@unipd.it)



Geografia Fisica e Dinamica Quaternaria, 44 (2) 2021

Supplementary material

DOI 10.4461/GFDQ.2021.44.11



LEGEND

Lithology

- Chlorite-sericite mica schists (Peio-Campo Unit)
- Dike (andesite)

Structural landforms (active)

- Selective erosion scarp

Features of hydrography-glacierisation

- Stream
- Lake
- Snowfield
- LIA glacier boundary

Fluvial landforms (active)

Erosional landforms

- V-shaped valley
- Edge of erosional scarp
- Abandoned channel

Constructive landforms

- Palustrine/lacustrine deposit
- Alluvial/debris flow fan (composite)

Gravitational landforms (active)

Erosional landforms

- Edge of degradational or landslide scarp
- Debris flow channel

Constructive landforms

- Landslide deposit
- Debris flow deposit
- Debris cone
- Scree slope
- Solifluction lobe

Glacial landforms (inactive)

Erosional landforms

- Glacial erosional scarp
- Edge of cirque
- Rounded rocky crest-line
- Sharp rocky crest-line
- Roche moutonnée
- Transfluence saddle
- Edge of kame scarp
- Ancient direction of glacial flow

Constructive landforms

- Pleistocene deposit > 1 m
- Pleistocene deposit < 1 m
- Olocene deposit > 1 m
- Olocene deposit < 1 m
- Moraine ridge
- Kame terrace
- Glacial contact deposit

Periglacial and nival landforms (active)

Erosional landforms

- Avalanche track

Deformation landforms

- Sorted polygons
- Patterned ground

Constructive landforms

- Rock glacier