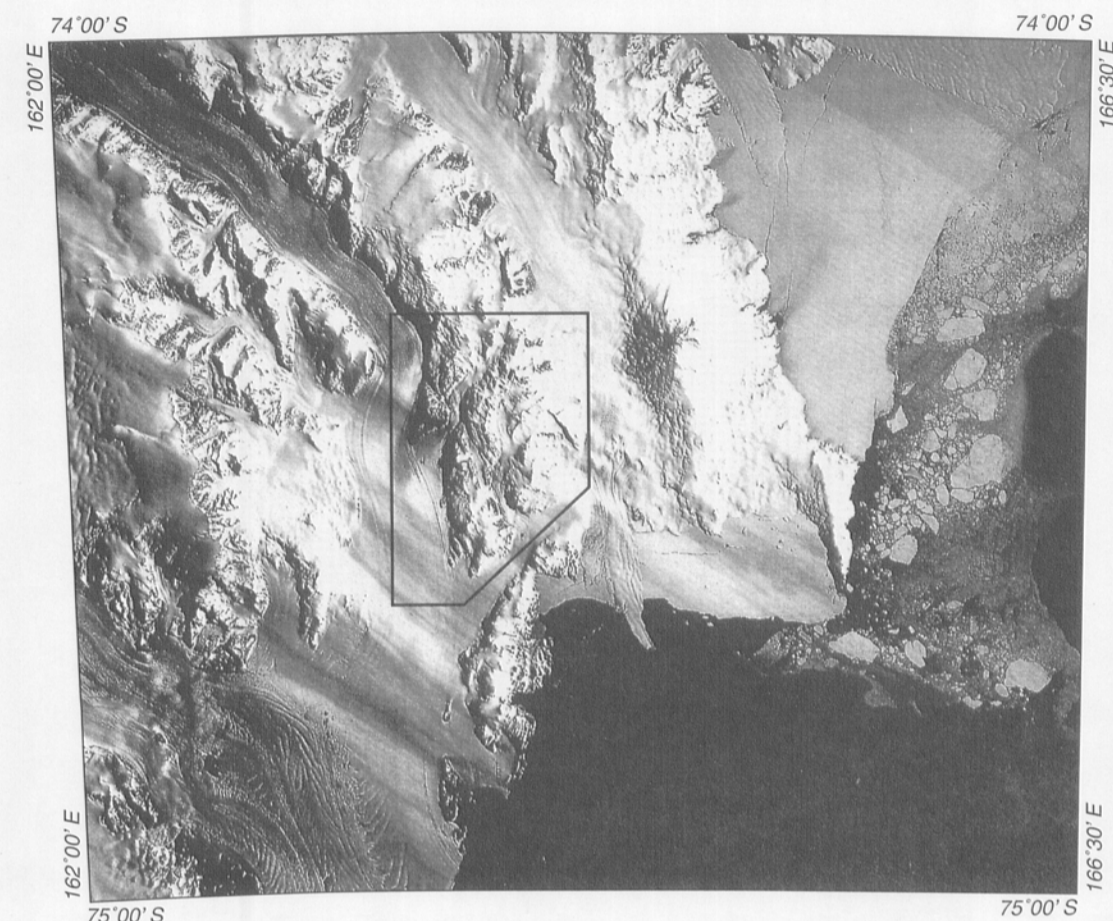
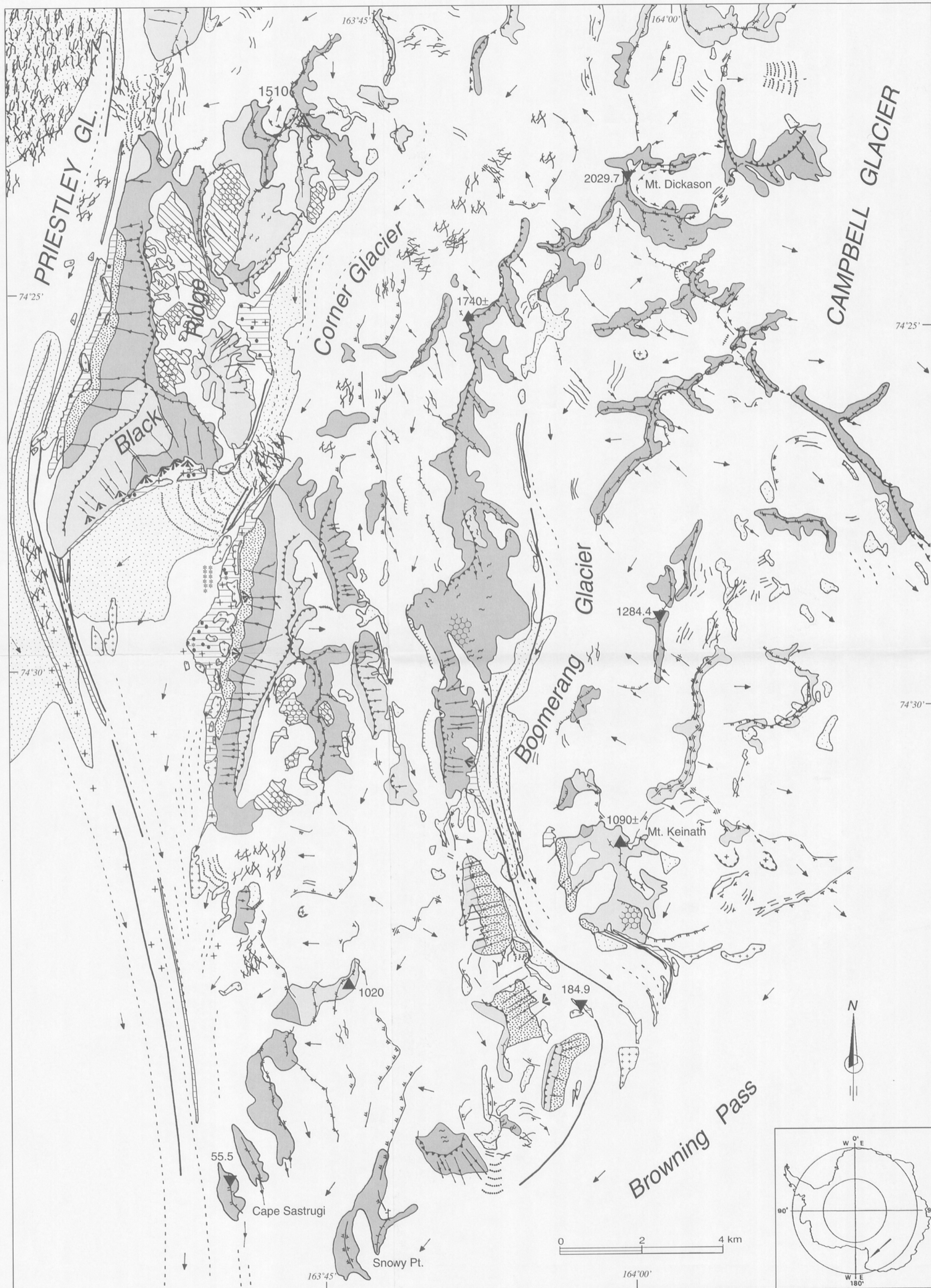


GEOMORPHOLOGICAL SKETCH MAP OF THE MOUNT DICKASON AREA (VICTORIA LAND, ANTARCTICA) MAPPED BY AERIAL PHOTOGRAPHS

Scale 1: 80,000

Biasini A., Osso P. & Salvatore M. C.



Scene 062-112, 062-113, 066-112 Landsat TM - Jan 1990
(Image processing by M. Frezzotti)

LEGEND

- | | | | |
|---|--|--|---|
| GLACIAL LANDFORMS AND DEPOSITS | | PERIGLACIAL LANDFORMS AND DEPOSITS | |
| | Edge of cirque or of glacial through (a = buried by ice) | | Avalanche track |
| | Horn | | Avalanche cone |
| | Boulders | | Polygons |
| | Dirt cones | | Gelifluction terraces |
| | Moraine | LANDFORMS AND DEPOSITS DUE TO GRAVITY | |
| | Shear moraine | | Talus slope and detrial coverage |
| | Supraglacial debris | MORPHOGRAPHIC ELEMENTS | |
| | Glacial deposit | | Ridge line (variable in shape) |
| GLACIAL FEATURES AND HYDROGRAPHY | | | Symmetric and sharp ridge |
| | Ice flow direction | | Asymmetric and sharp ridge |
| | Selected flow line | | Rounded ridge |
| | Ogive | | Asymmetric and rounded ridge |
| | Ice bulge | | Break of slope |
| | Frozen lake (a = not mappable) | | Change of slope |
| | Crevasse | | Change of slope overhanging an escarpment |
| | Ice fall and crevassed area | LITHOLOGY AND OTHER DATA | |
| | Snow covered glacier and snowfield | | McMurdo Volcanics. QUATERNARY |
| | Glacier ice | | Intrusive rocks of Granite Harbour Intrusives. ORDOVICIAN |
| AEOLIAN LANDFORMS AND DEPOSITS | | | Metamorphic rocks of Wilson Terrane. ?PRECAMBRIAN-?EARLY ORDOVICIAN |
| | Snowdrift (arrow indicates the wind direction) | | Spot height (a) and geodetic point (b) |
| | Windscoop | | |